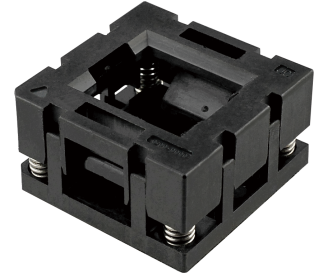


Open Top Test Socket

Size □30mm x 30mm / □1.18" x 1.18"

Features:

- Acceptable Wide Range of Package Thickness
- Acceptable various Pin Pitch and the Number of Pins
- Better Thermal condition
- Suitable for Automatic Device Setting
- Custom Design Welcome



Specification (typical)

Rate Current : 1.0A at 25°C
 Contact Resistance : 100mΩ max
 Dielectric Strength Voltage : AC100V rms 1 min
 Insulation Resistance : 1000MΩ min at DC100V
 Temperature Range : -40°C TO +150°C

mm

How to order

GUT30K-□□□□-□□□□-BB

Pin Number, Style

BB : With Alignment Guide
 BN : No Alignment Guide

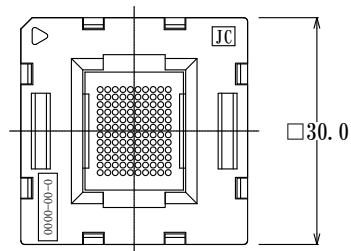
P/N will be informed after fixing specifications.

Pin Pitch

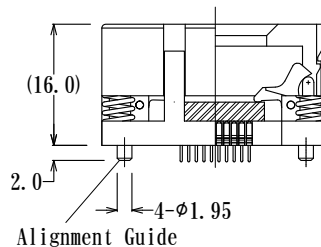
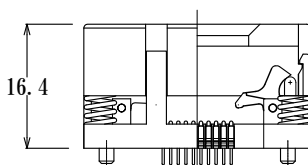
- 0.4mm
- 0.5mm
- 0.65mm
- 0.8mm
- 1.0mm
- 1.27mm
- Other

How to order (example)

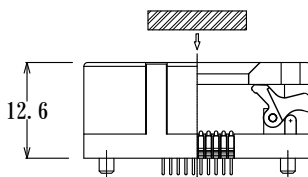
GUT30K-U800-STDJ-BB



Actual Size



Alignment Guide



7	SPRING	4	SUS
6	SPRING	2	SUS
5	SHAFT GU22S	2	SUS
4	SPRING PROBE	94	PLUNGER: BeCu Au over Ni plating BARREL: BRASS Au over Ni plating SPRING: SUS Au over Ni plating
3	LATCH	2	High Temperature Plastic
2	BASE	1	High Temperature Plastic
1	COVER	1	High Temperature Plastic
No	Part Description	Qty	Remarks