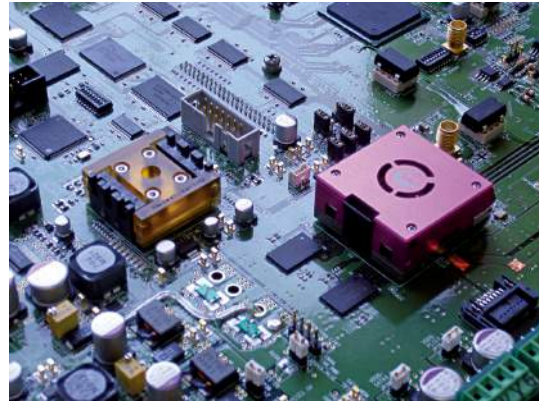


PC Board Mounting Sockets

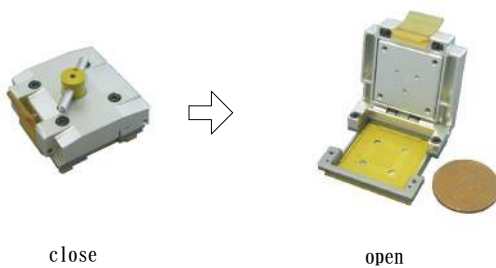
Here is IC Packaging size socket, which is optimized to the real use board by making small area of the part which contact to PCB. Short-sizes probe is adapted and can be measured high-speed transmission signal. There are a screw mount type and a surface mount type.



Screw mount type

Outersize 14.5mm

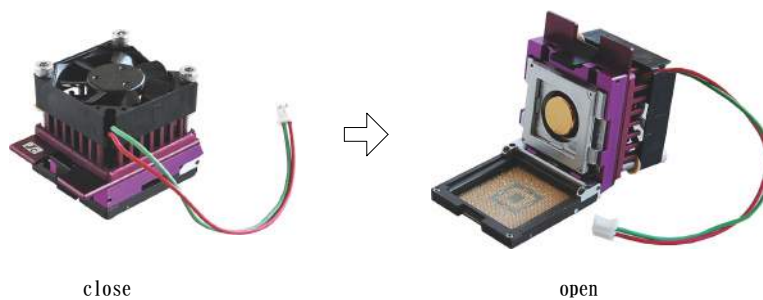
1000pin type
Low profile
Side push type lid



With a fan motor



With a fan motor and heatsink

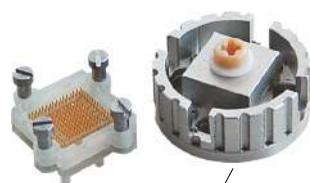


Intended Application
Mounting on PCB for mass-production
Final test and inspection at real environment
(ex. automobile, robotics, electrical devices for mobility)
IC failure analysis

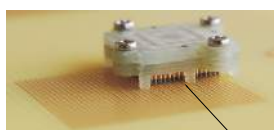
Regarding surface mount, please contact us.

Surface mount type

0.4mm pitch

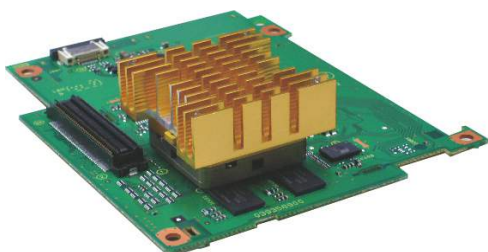


Rotary lid



Surface mount

Heat sink type

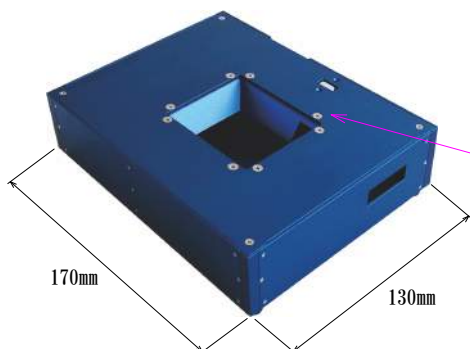


Rotary lever type



We also design user-friendly IC socket case.
It can store whole of PCB for dust-proof and reinforcement
of PCB. Please contact us.

example)



Mounting Socket

Dust proof film

