

Board to Board Right Angle High Current Connectors HARS, HARP series

5.6mm pitch

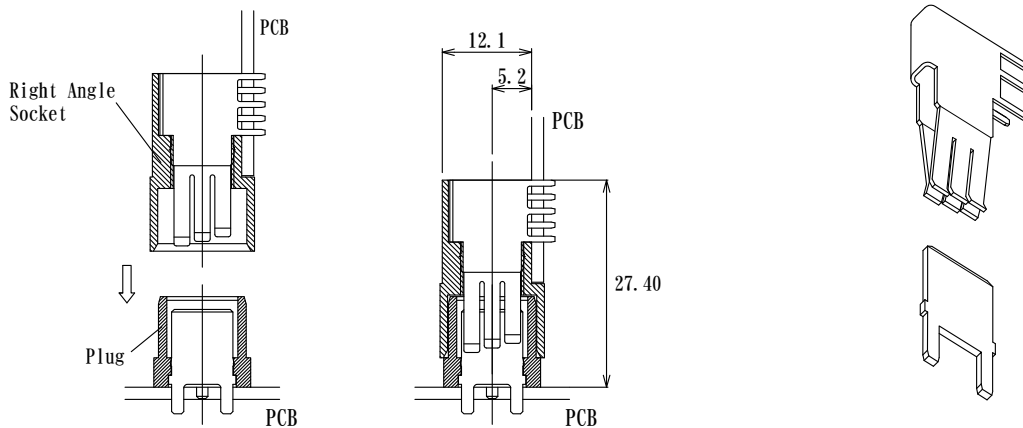
35A max

Features:

1. Current rating : 35A max in case of 1 position
(please refer table below for other number of positions)
2. Dielectric voltage : AC1000V



Mating configuration



Current rating table

Positions	Current rating (A)
1	35
2 (Adjacent case)	30

Specifications

Current rating	35A max	
Dielectric withstanding voltage	AC 1000V 1 minute	
Insulation Resistance	DC 500V 1000MΩmin	
Contact Resistance	10mΩ max	
Operating Temperature Range	-25℃~+105℃ (including temp. rise by current flow)	
Temperature Range	-55℃~+150℃	
Mating Holding Force per pin	0.4N (40.8gf) ~4.5N (459gf)	
Contact durability	less than 10mΩ after 500 mating cycles	
Material	Insulator	High temperature thermoplastic, Black
	Plug Pin	Copper Alloy Gold plated or Tin plated (Standard Plating)
	Center Socket Contact	Copper Alloy Gold plated or Tin plated (Standard Plating)

Specifications subject to change without notice.

Board to Board Right Angle High Current Sockets HARS series

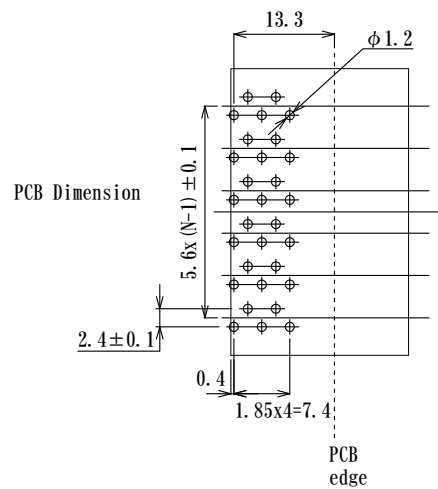
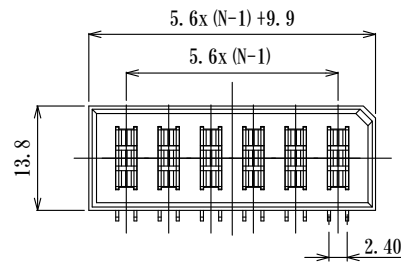
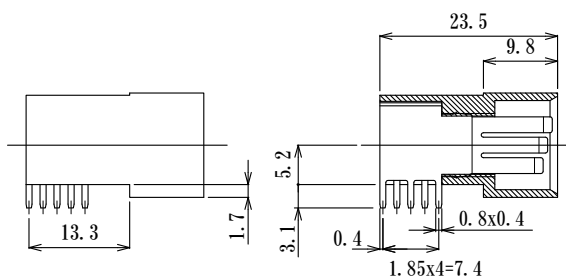
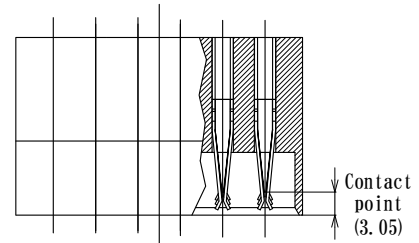
HARS-06PR-T UL, CSA approved
UL File Number E474715
30A in conformity to UL test guidelines
10A in conformity to CSA test guidelines

How to order

HARS - 06 P R - T

N : Number of positions
04 : 4 positions
06 : 6 positions

Plating
T : Ni over tin plating
(standard plating)
G : Ni over Au plating



Board to Board Right Angle High Current Plugs HARP series

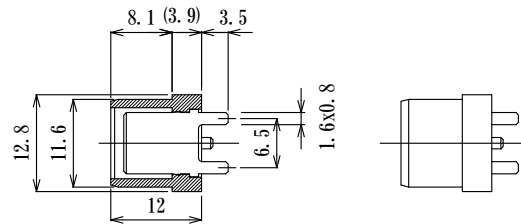
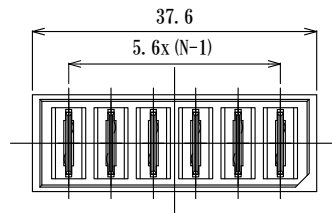
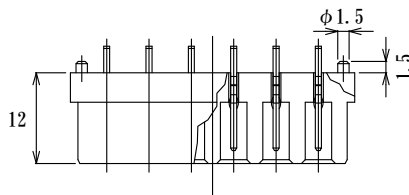
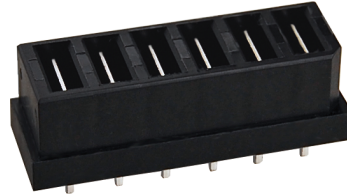
HARP-06PR-T UL, CSA approved
UL File Number E474715
30A in conformity to UL test guidelines
10A in conformity to CSA test guidelines

How to order

HARP - 06 P R - T

N : Number of positions
04 : 4 positions
06 : 6 positions

Plating
T : Ni over tin plating
(standard plating)
G : Ni over Au plating



PCB Dimension

