

RF Test Socket, Short Probe pin Socket GGI series

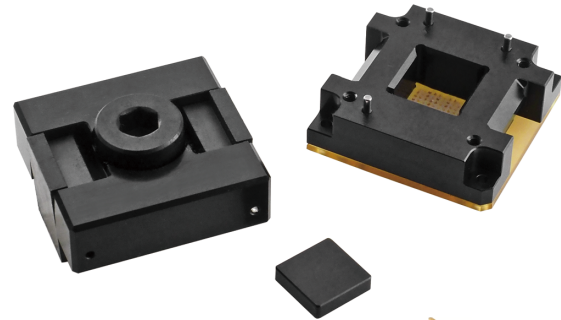
Bandwidth 22 to 35GHz

Burn-in Test

Features:

GGI series socket is aim to use at RF. It can also be used for burn-in test.
JC Electronics's high reliability short length spring probes are used as contact.
We accept customized specification, please feel free to contact us.

- Usable For Various Device Types
- Good High Frequency Response
- Good Durability
- Better Thermal Condition
- Custom Design welcome (Usable For Clamshell Type)



Short Probe pin
(Length 1.5mm max)

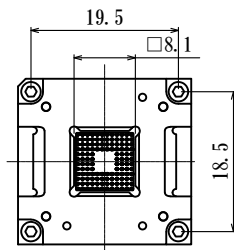
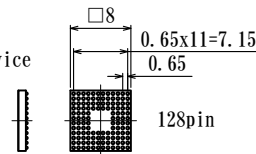
How to order

GGI-040P-□□□□□

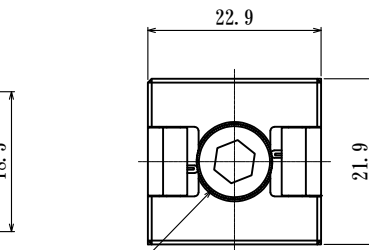
- 040P : 0.40mm pitch
- 050P : 0.50mm pitch
- 065P : 0.65mm pitch
- 080P : 0.80mm pitch

P/N will be informed after fixing specifications.

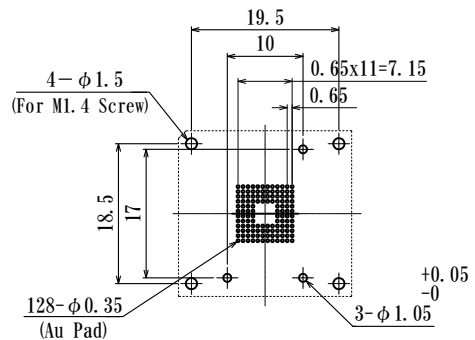
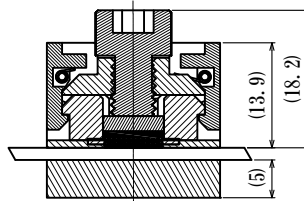
In case BGA Device



Without Lid
Actual size



M6x1.0P

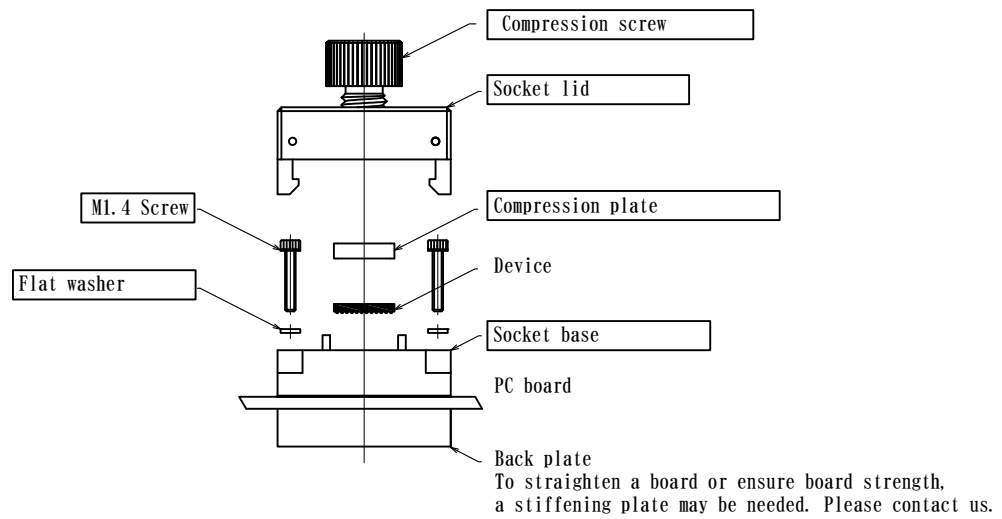


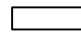
PCB Pattern (Top View)

Specification

P/N	GGI-040P-□□□□□	GGI-050P-□□□□□	GGI-065P-□□□□□	GGI-080P-□□□□□
pitch (mm)	0.4	0.5	0.65	0.8
Acceptable device type	QFN , LGA , BGA , QFP , etc			
Acceptable device size	□ 10 mm max **			
Probe Pin Length (mm)	1.03	1.26	0.98	1.5
Travel (mm)	0.22	0.3	0.16	0.25
Force (N) /IPin	0.19	0.18	0.35	0.13
Contact Resistance (mΩ)	<100			
Bandwidth (GHz@-1dB)	33	35	35	22
Self Inductance (nH)	0.55	0.55	0.3	0.55
Mechanical Life (cycle)	100,000			
Temperature Range (°C)	-40 ~ +150		-40 ~ +125	-40 ~ +150
Remarks	MMD33125C4-019N	MMD39150C4-018N	MMD51113F2-035N	88YKF66L15-13G

**Please contact us for over described size.



 Boxed parts are adjunct to the Test Socket.

Note)
After closing the lid and screwing with compression screw, measurement setup is completed.
Do not close the lid after screwing or tighten over maximum torque, otherwise it may causes of trouble.
Because the maximum torque is depends on the IC device type, number of positions and pitches, please contact us.

·Your Specific Custom Designs welcome. Consult us for details.