

# RF Test Socket, Elastomer Socket, Conductive elastomer sheet ,GGT18 series

Bandwidth 40GHz

### Features:

GGT18 series is conductive elastomer sheet type socket and usable up to 40 GHz \*. Because the contacts are embedded across the surface, the RF Test Socket can be used for a variety of IC devices and even irregular pin locations.

### Specification (typical)

Bandwidth : -1.0dB@40GHz \*  
pitch : 0.3mm ~  
Contact Resistance : 100mΩ max  
Temperature Range : -35°C TO +100°C  
Acceptable device types : BGA , LGA , QFN , QFP , etc  
Acceptable device size : □10 mm max \*\*

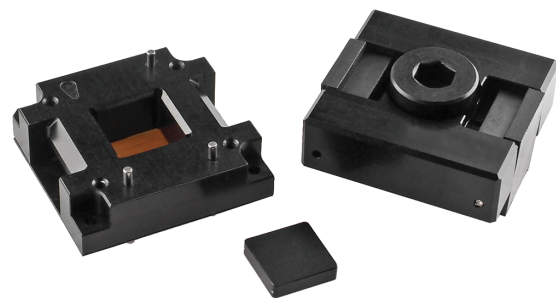
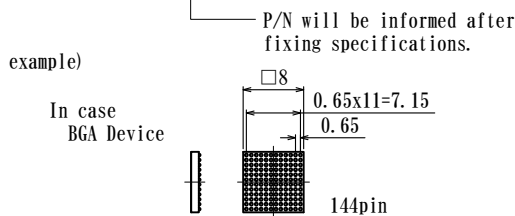
\*It depends on the use.

\*\*Please contact us for over described size.

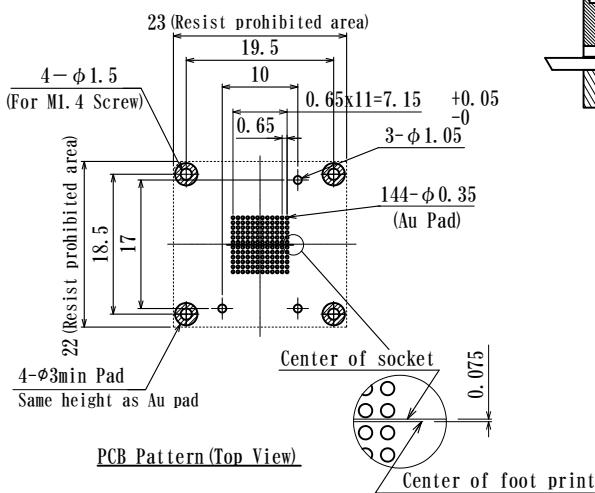
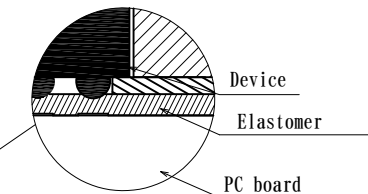
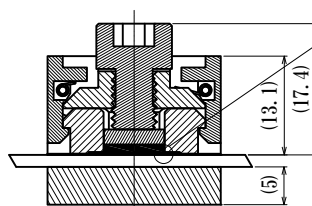
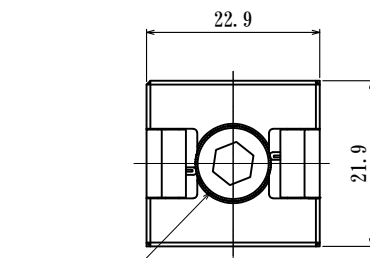
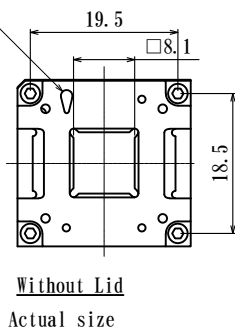
- For Device Evaluation
- Usable For Various Device Types
- Small Size
- Good High Frequency Response
- Short Delivery Time

### How to order

GGT18-□□□□□□□□□□

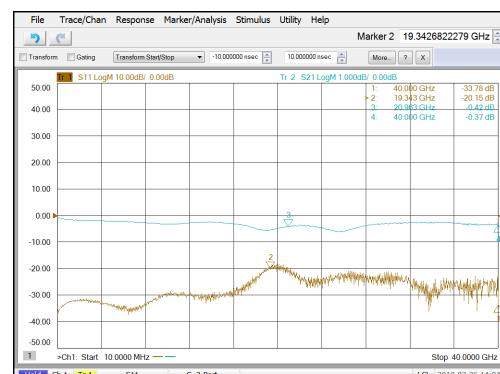


### Index for direction of elastomer.

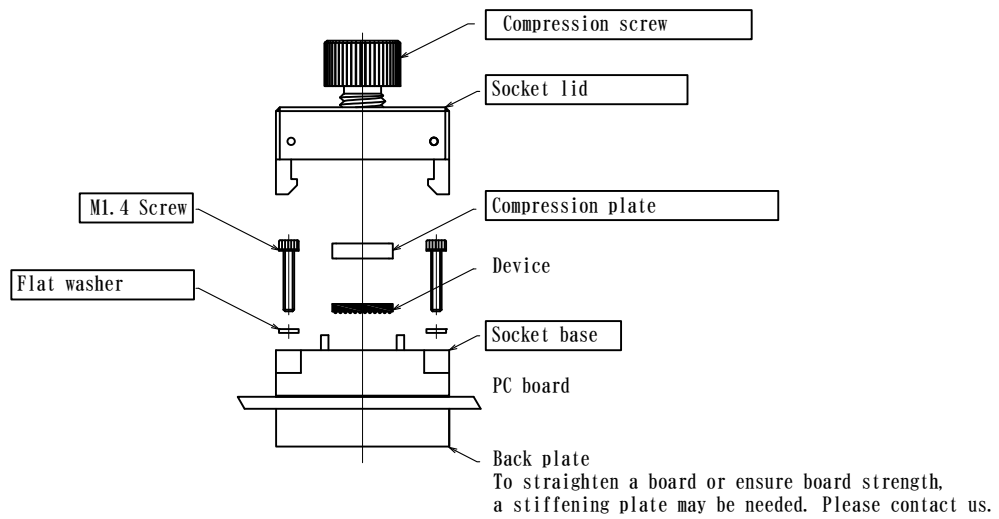


Center of socket should be offset 0.075mm from center of foot print.

Return loss  
Insertion loss



Return loss:-33.78dB@40GHz  
Insertion loss:-0.37dB@40GHz



Boxed parts are adjunct to the Test Socket.

Note)

After closing the lid and screwing with compression screw, measurement setup is completed.

Do not close the lid after screwing or tighten over recommended torque, otherwise it may causes of trouble.

Because the recommended torque is depends on the IC device type, number of positions and pitches, please contact us.

·Your Specific Custom Designs welcome. Consult us for details.